



TOP DOG

CHOOSE THE **PERFECT BREED** FOR YOU

TOP

DOG







DK
TOP
DOG

BY DENNIS-BRYAN / TRACY JORGAN

DK

CONTENTS

1 INTRODUCTION TO DOGS





2 GUIDE
TO BREEDS

3 CARE AND
TRAINING







INTRODUCTION TO DOGS

WHAT IS A DOG?

The evolution of the dog from wild predator to domestic companion has been greatly influenced by human intervention. It has taken just a few hundred years to produce seemingly endless variations on the canine theme—but planned breeding has not removed the basic characteristics of the dog's ancestor, the wolf.



Dogs are social animals

Evolution of the dog

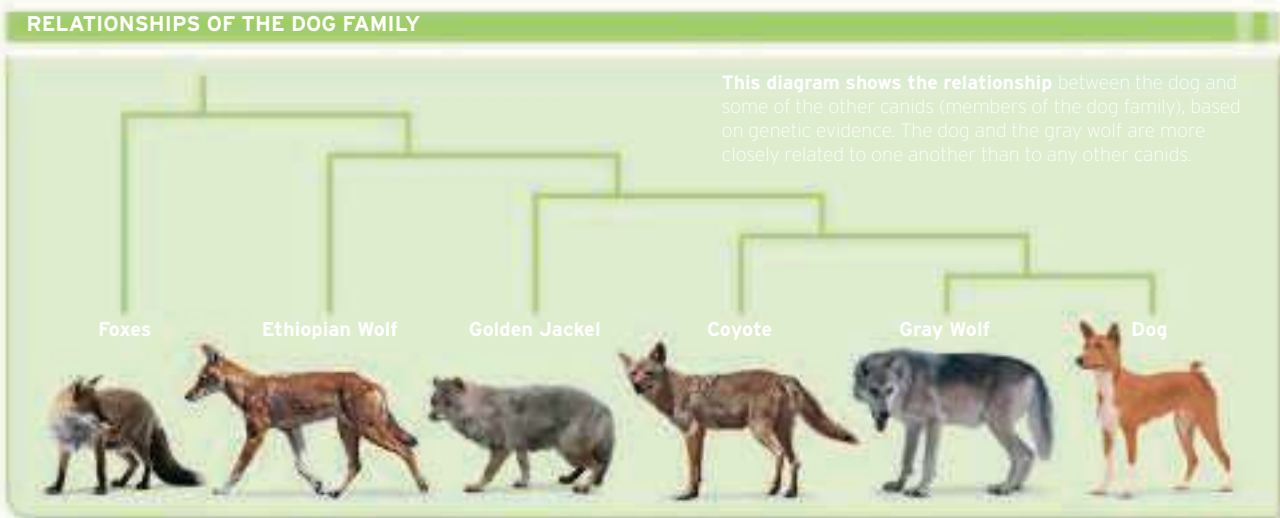
Domestication of the dog is a process that has been ongoing for thousands of years. It is believed that the first dogs were domesticated from wild canids, such as wolves or foxes, around 15,000 years ago.

Over time, humans have selectively bred dogs for various traits, such as size, color, and behavior. This has led to the development of many different breeds, each with its own unique characteristics.

Despite their diverse appearances, all dogs share a common ancestor and are members of the same species, *Canis lupus familiaris*.

In from the wild

While dogs have been domesticated for thousands of years, they still retain many of the characteristics of their wild ancestors. For example, dogs are social animals and often live in packs.





The shape of a head

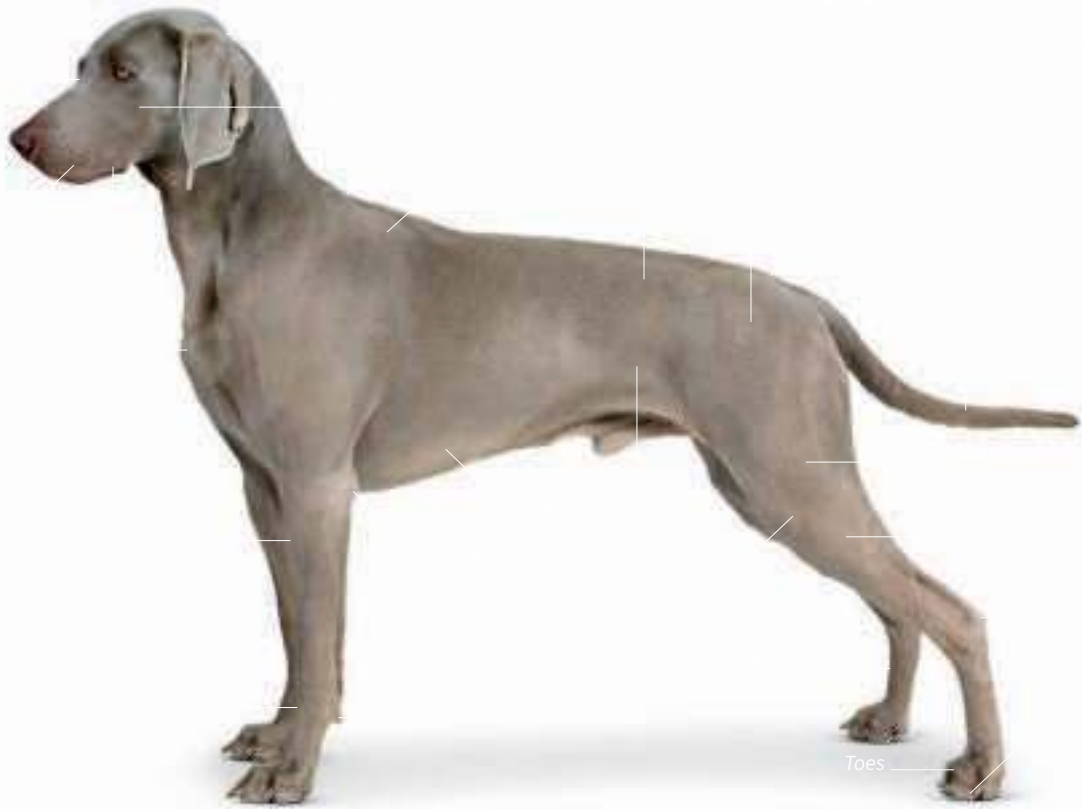


Dog anatomy

Dog DNA

Doing things cooperatively is an inbuilt canine characteristic. Most domestic dogs look to humans as their pack leaders.





Toes





HOW DOGS ARE GROUPED IN THIS BOOK





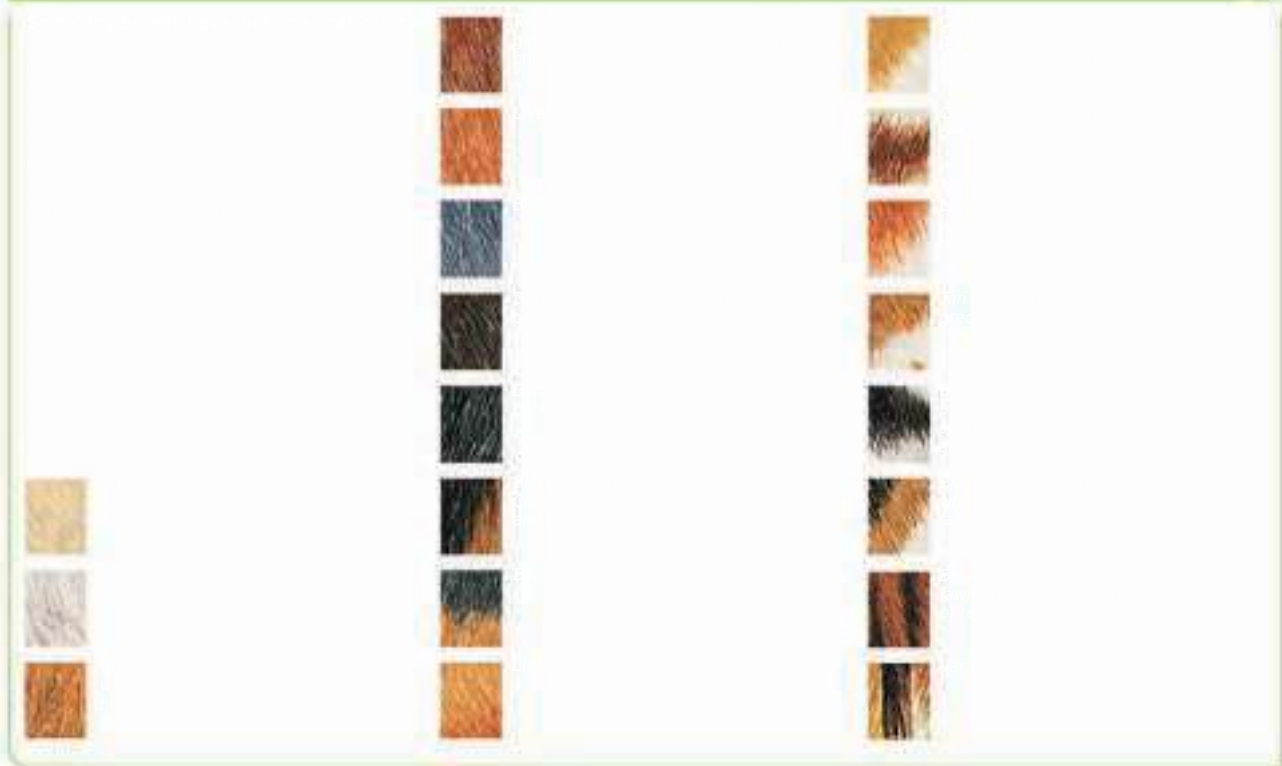
HOW TO USE THE BREED CATALOG



-
-
-
-
-



COAT COLORS



CHOOSING THE RIGHT DOG



A puppy can grow into a big dog, so know what you are buying

The dog you choose will probably be your companion for the next ten or twelve years, so making the right decision is important. Being faced with more than 400 different breeds with a variety of exercise, training, and grooming needs can be bewildering. This section provides advice and flowcharts to help you narrow down your choice.

The perfect match

When you choose a dog, you are choosing a companion for the next ten or twelve years. It's important to choose a dog that fits your lifestyle and needs. Consider the dog's exercise, training, and grooming requirements. A dog that requires a lot of exercise and training may not be the best choice for someone who is busy or has a limited budget. A dog that requires a lot of grooming may not be the best choice for someone who is not willing to spend a lot of money on grooming. Think about the dog's temperament and how it will fit into your family. A dog that is very energetic and playful may not be the best choice for someone who is looking for a calm and quiet companion. A dog that is very affectionate and loyal may not be the best choice for someone who is looking for a dog that is independent and self-sufficient. Take your time and do your research to find the dog that is the perfect match for you and your lifestyle.

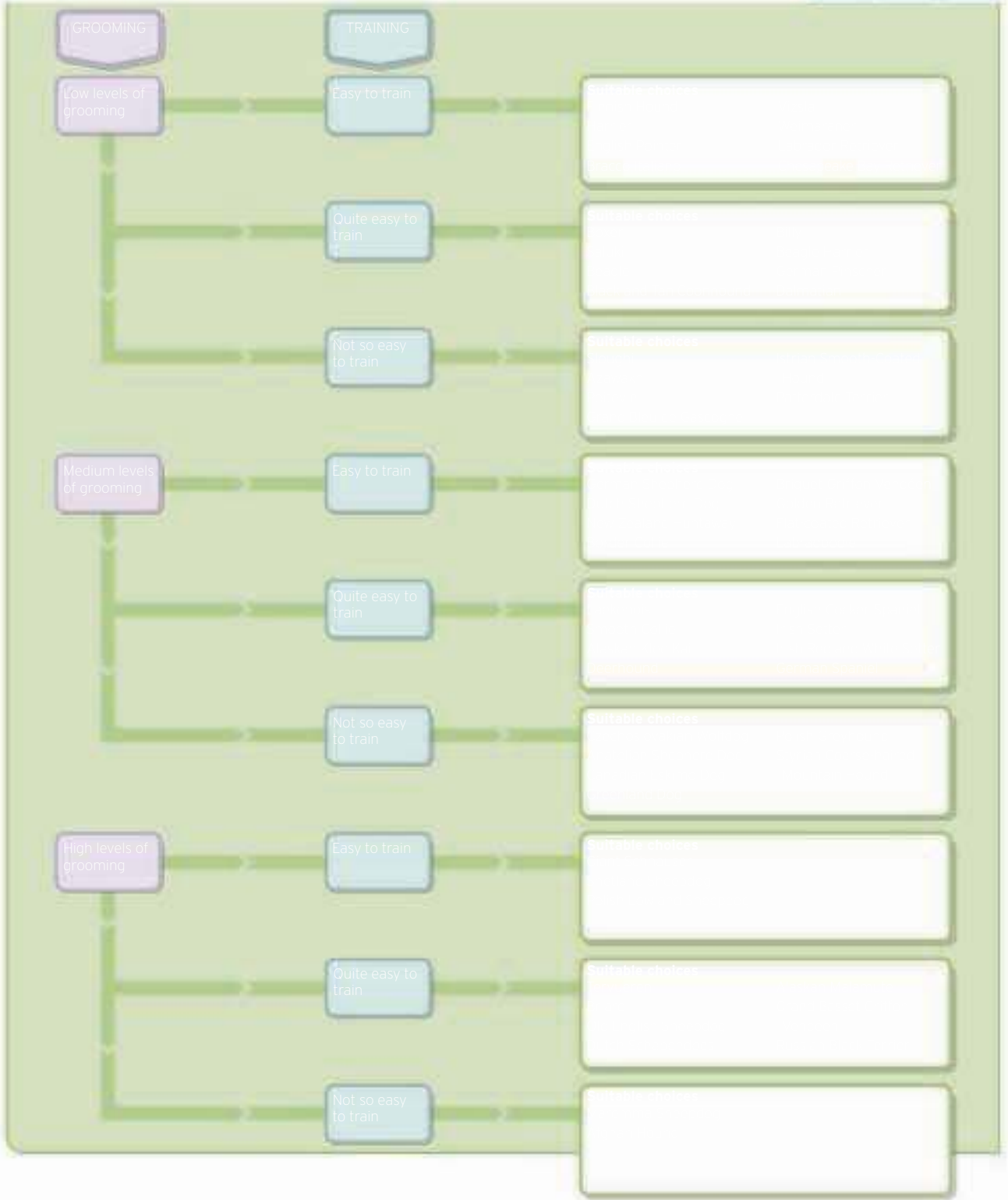
When you choose a dog, you are choosing a companion for the next ten or twelve years. It's important to choose a dog that fits your lifestyle and needs. Consider the dog's exercise, training, and grooming requirements. A dog that requires a lot of exercise and training may not be the best choice for someone who is busy or has a limited budget. A dog that requires a lot of grooming may not be the best choice for someone who is not willing to spend a lot of money on grooming. Think about the dog's temperament and how it will fit into your family. A dog that is very energetic and playful may not be the best choice for someone who is looking for a calm and quiet companion. A dog that is very affectionate and loyal may not be the best choice for someone who is looking for a dog that is independent and self-sufficient. Take your time and do your research to find the dog that is the perfect match for you and your lifestyle.

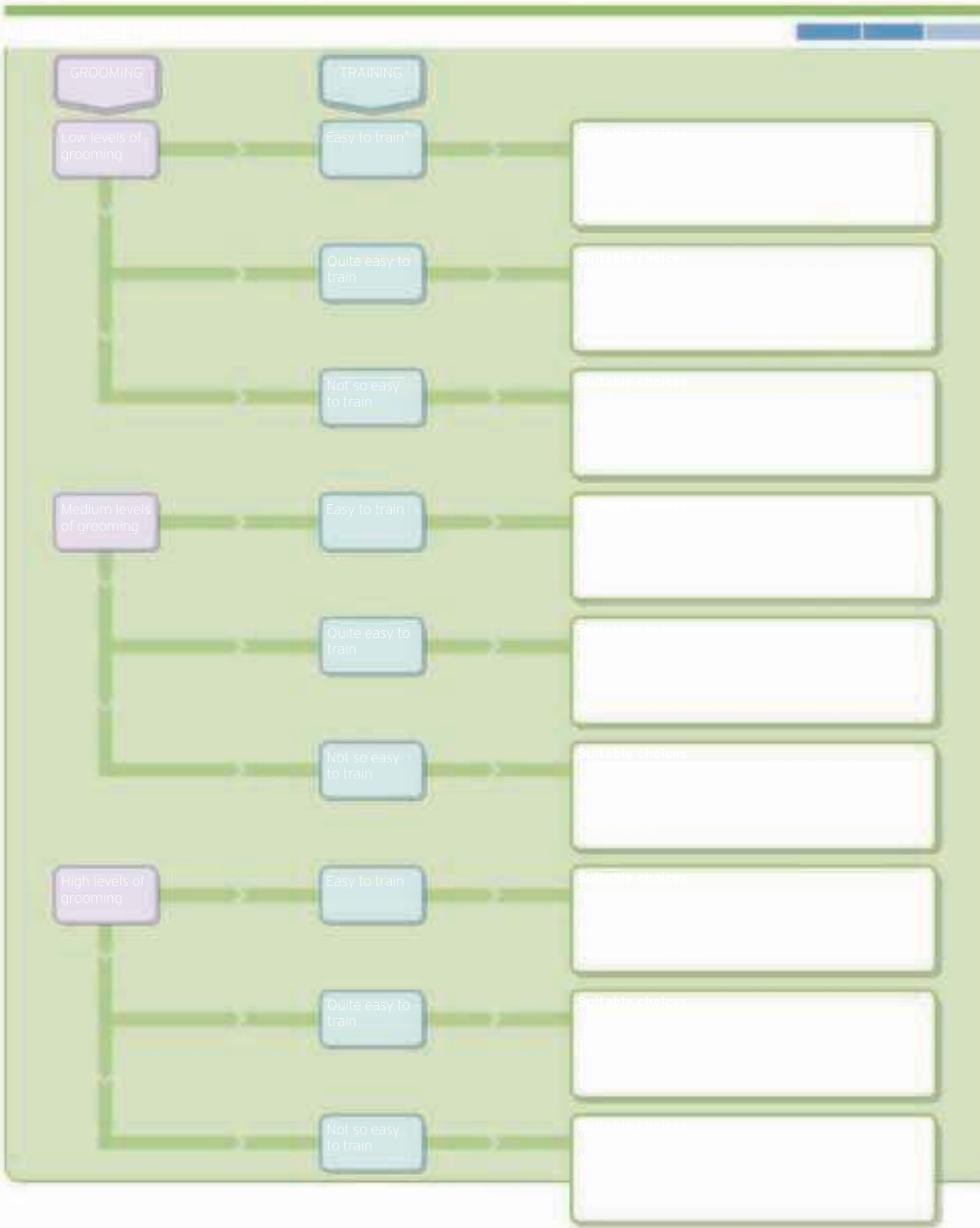
HOW TO USE THE FLOWCHARTS

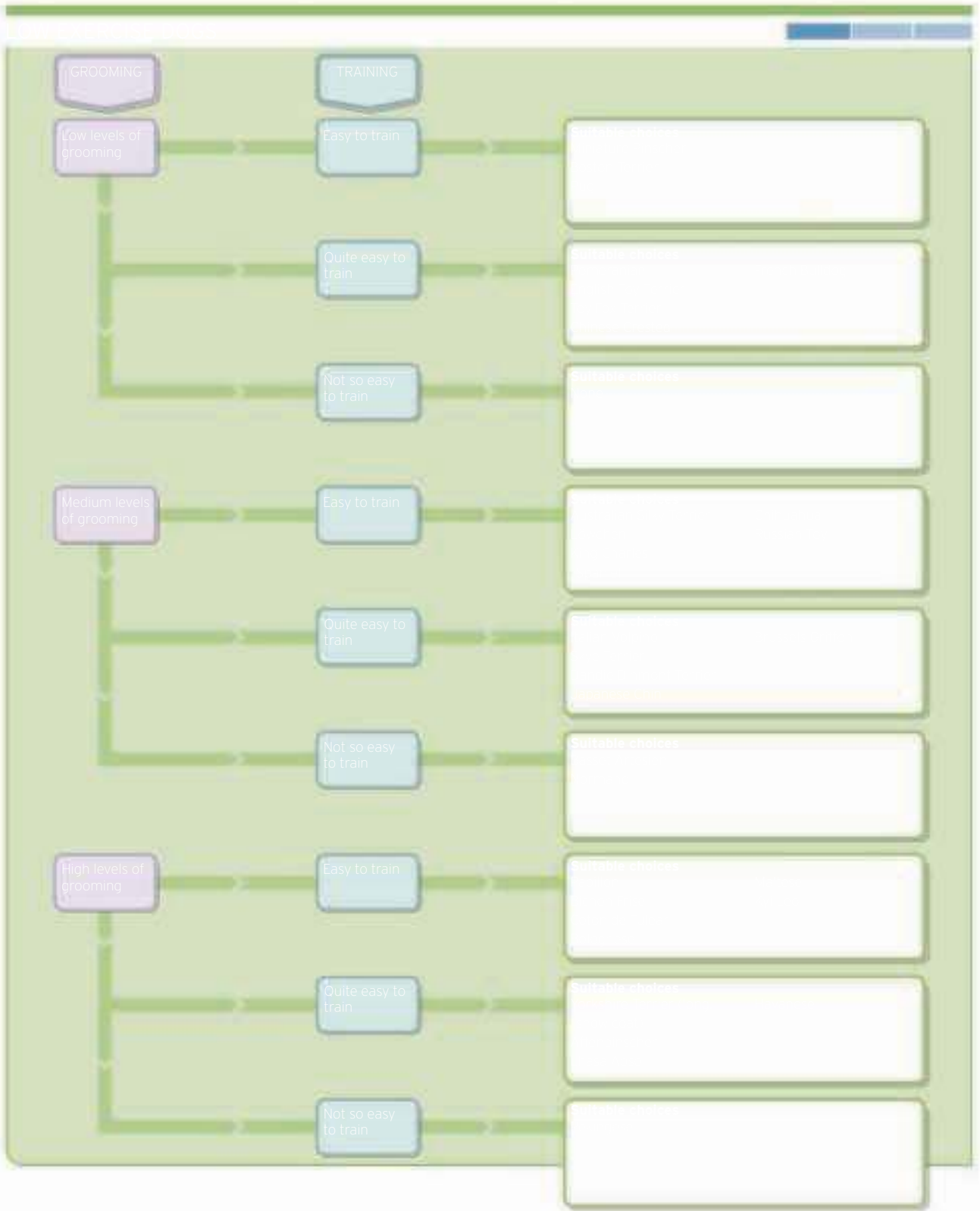
Exercise Requirements	Training Requirements	Grooming Requirements
HIGH More than 2 hours per day	HIGH Every day	HIGH Not so easy to train—time consuming
MEDIUM 1-2 hours per day	MEDIUM More than once a week	MEDIUM Quite easy to train—needs patience
LOW Up to 30 minutes per day	LOW Once a week	LOW Easy to train



High level of grooming









Puppies & Puppies



Puppy Farms





10 IMPORTANT QUESTIONS TO ASK A BREEDER

A large empty rectangular box with a thin yellow border, intended for writing the 10 important questions to ask a breeder.







GUIDE TO BREEDS

AFRICAN HUNTER

Elegant and immaculate, the Basenji makes the most civilized of pets, but this African breed worked as a hunting dog for thousands of years.



- **[download Scandalous](#)**
- [Ramayan: A Poetic Translation here](#)
- [read Merleau-Ponty and Environmental Philosophy: Dwelling on the Landscapes of Thought](#)
- **[read online A Dismal Thing to Do \(Madoc Rhys, Book 3\)](#)**
- [read Ryan's Return here](#)

- <http://conexdx.com/library/Selling-Hitler--The-Story-of-the-Hitler-Diaries.pdf>
- <http://test.markblaustein.com/library/Ramayan--A-Poetic-Translation.pdf>
- <http://berttrotman.com/library/Enterprise-Integration-Patterns-for-SAP-NetWeaver-PI.pdf>
- <http://weddingcellist.com/lib/A-Dismal-Thing-to-Do--Madoc-Rhys--Book-3-.pdf>
- <http://junkrobots.com/ebooks/Classification--Disease-and-Evidence--New-Essays-in-the-Philosophy-of-Medicine--History--Philosophy-and-Theory-o>